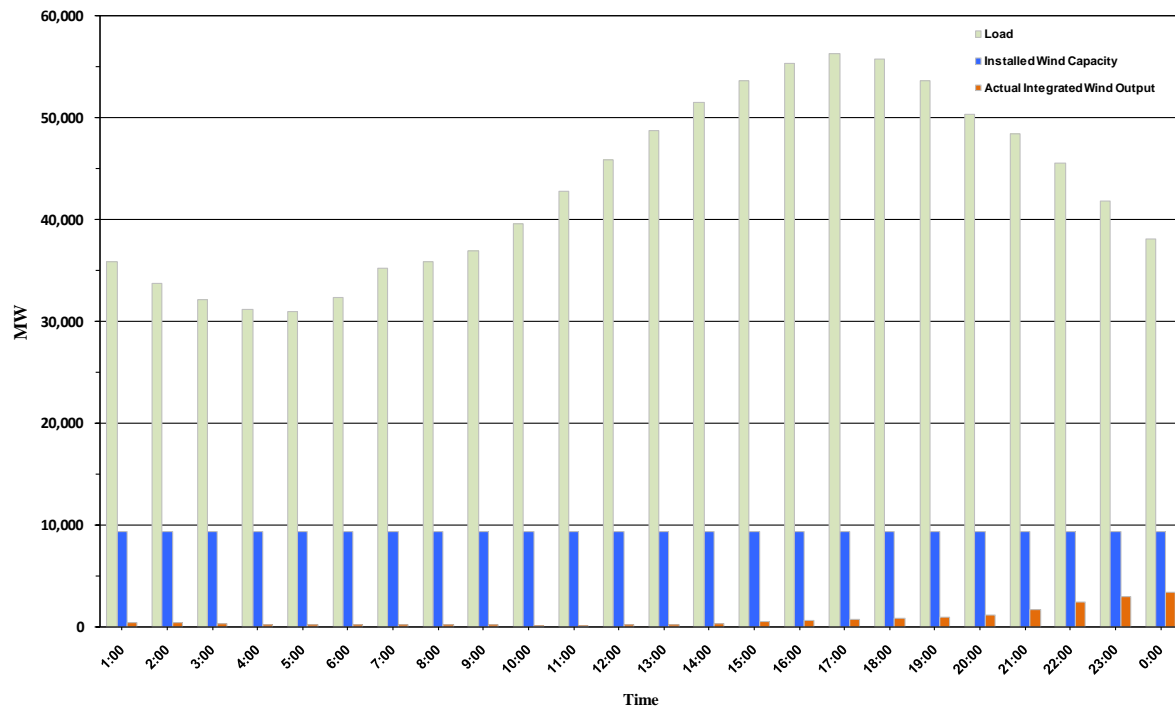




ERCOT Grid Operations Wind Penetration Report: 08/27/10

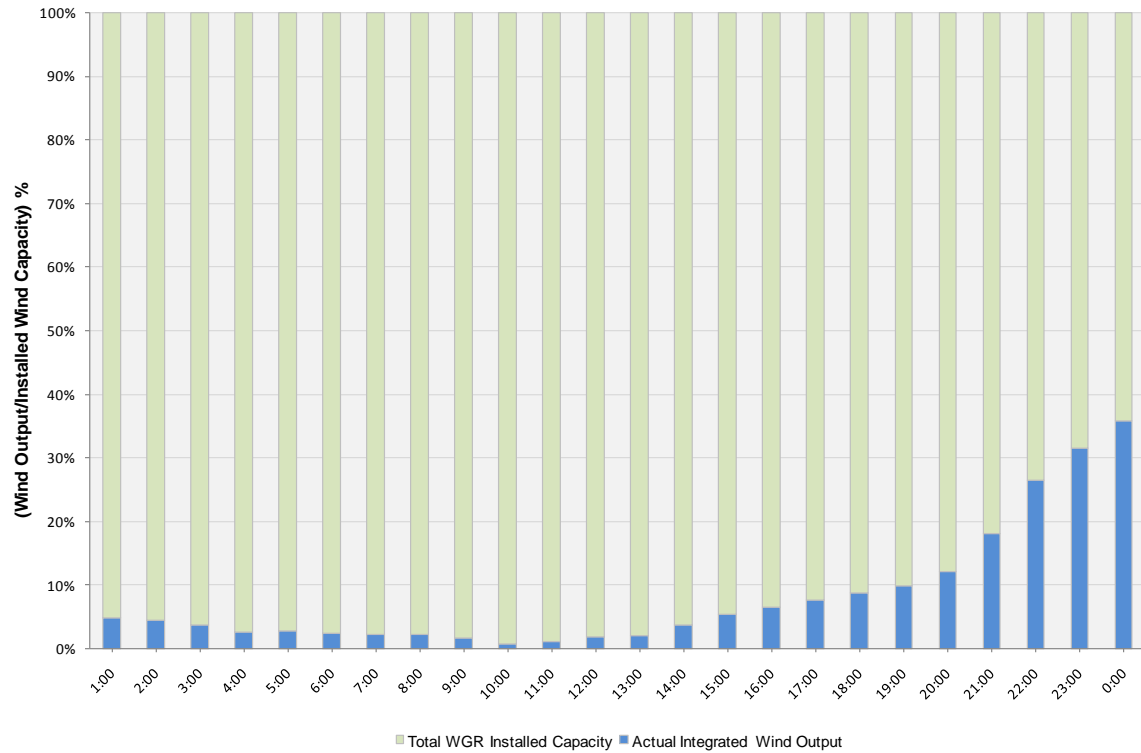
Peak Load	56,281 MW
Load Peak Hour	17
Wind Record 06/12/10	7016 MW
Max Wind value	3510 MW
Wind Peak Hour	23:59:56
Wind Penetration %	9.69

Hourly Average Actual Load vs. Actual Wind Output
08-27-2010

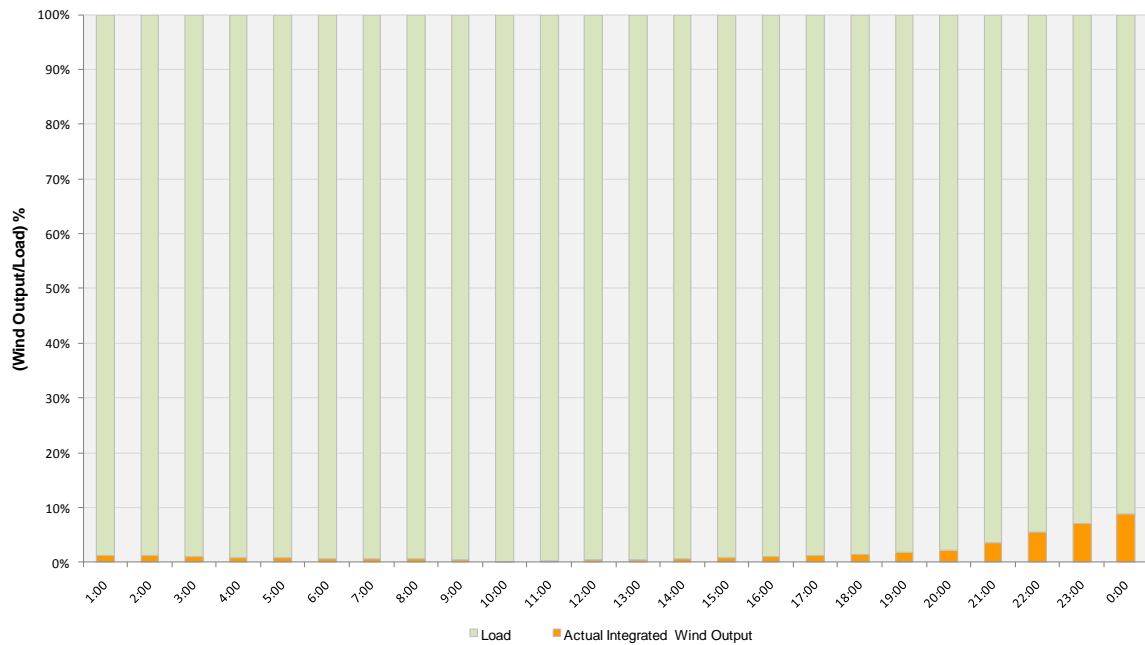




Actual Wind Output as a Percentage of the Total Installed Wind Capacity
08-27-2010



Actual Wind Output as a Percentage of the ERCOT Load
08-27-2010





ERCOT Load vs. Actual Wind Output 08/20/10 - 08/27/10

